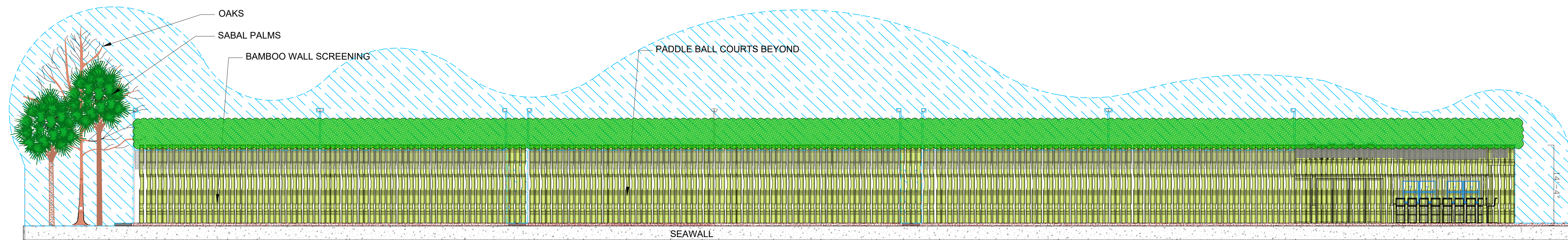


**VIEW OF NEIGHBORS WITHOUT Bamboo Screening!**

**Elevation of Glass Courts**

1" = 10'-0"



**VIEW OF NEIGHBORS WITH THE BAMBOO SCREENING!**

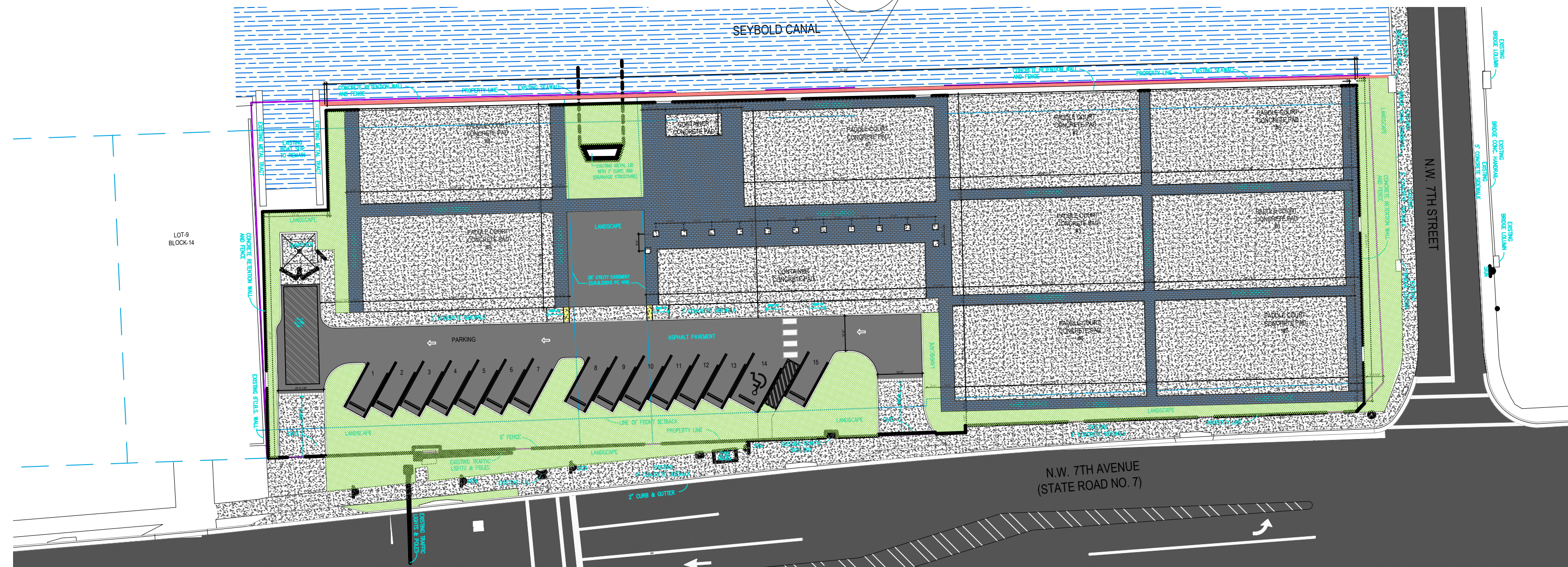
1

**Bamboo Screening Elevation of Glass Courts**

1" = 10'-0"

**VIEW OF NEIGHBORS ON OPPOSITE SIDE OF CANAL**

1



**SITE PLAN**

1/32" = 1'-0"



**WHAMIN BAMBOO**

NOTE: THE PROPOSED BAMBOO WHAMIN WILL BE PLANTED AT A HEIGHT OF 14' FEET FROM ONE END OF THE COURT TO THE OPPOSITE END. OR AS IT IS SAID IN THE BUSINESS- WALL TO WALL. THE PHOTO IS THE PROPOSED PLANT SCREENING THAT WILL FIT THE PLANTING SPACE TO SCREEN FROM NEIGHBORS. IT IS A FAST GROWER AND WILL GROW UP TO 40'+.  
 DISCLAIMER: THE LANDSCAPE ARCHITECT IS NOT RESPONSIBLE FOR THE MEANS AND METHODS OF CONSTRUCTION OR PLANT SELECTION AND INSTALLATION. THAT FALLS DIRECTLY ON THE CONTRACTOR AND ITS SUB-CONTRACTORS. THIS PLAN IS A REPRESENTATION OF WHAT THE SCREENING WILL LOOK LIKE ONCE PLANT IS ESTABLISHED.

**Mariano Corral**  
 Landscape Architect  
 Golf Course Design  
 Land Planning  
 Urban Design  
 Member of the American Society of Landscape Architects  
 IN ASSOCIATION WITH  
 CHI CHI RODRIGUEZ  
 GOLF COURSE DESIGN

**PROJECT**

**PADEL 42**

600 NW 7TH AVE.  
 Miami, FL. 33155

**OWNER**

PADEL 42, LLC

These designs and drawings are COPYRIGHTED and are the property of Mariano Corral Landscape Architect, P.A. and MAY NOT be reproduced except with specific written consent FROM the Landscape Architect.

The contractor and his sub-contractors must check and verify all the work on the drawings such as; dimensions, planting design with the plant list, details, and survey of the job and is responsible for same and reporting any discrepancies to the Landscape Architect before commencing any work for clarification. No drawings shall be scale.

SCALE:	AS SHOWN
PROJECT NUMBER	50-11012022-C
DRAWN BY:	MC
CHECKED BY:	MC
DATE:	02-10-23

**REVISIONS:**



Know what's below.  
 Call before you dig.  
 IT'S THE LAW!

VALID CERTIFIED DIGITAL SIGNATURE:

**SEAL:**

LIC.# LA 666671

SHEET NUMBER:

**LCD-001**

OR:

3001 SW 109 Court  
 Miami, Florida 33165  
 OIT: (305) 551-1262  
 EMAIL: marianocorral@comcast.net

PROJECT PROCESS NUMBER:

PERMIT NUMBER: